



# Outcomes From a Special Study of Child Welfare Families Participating in Triple P

**Nicole M. Young, MSW**

First 5 Santa Cruz County/  
Optimal Solutions Consulting



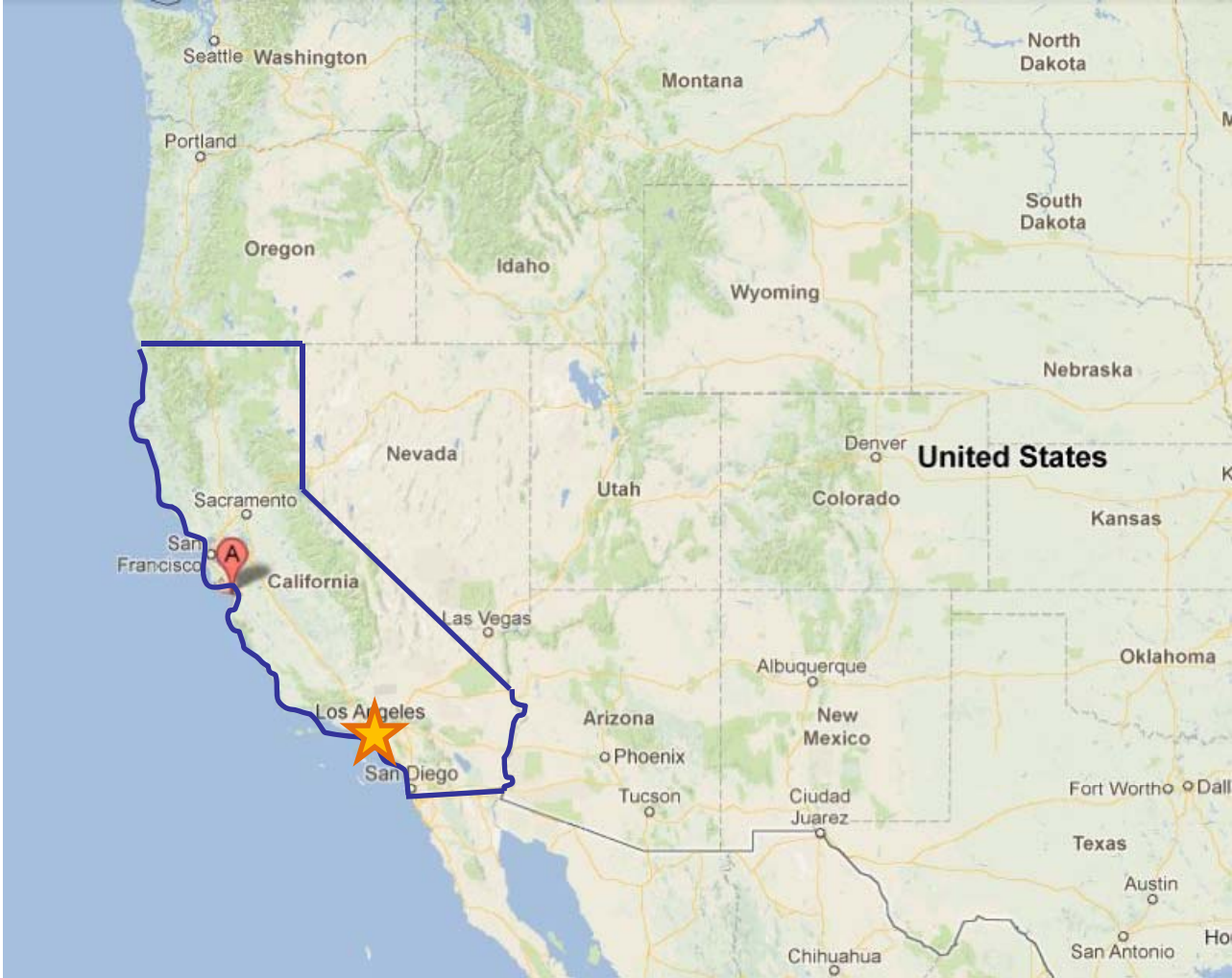
**Kimberly L. Carpenter, PhD**

Applied Survey Research





# Where Is Santa Cruz County, California?





# Where Is Santa Cruz County, California?





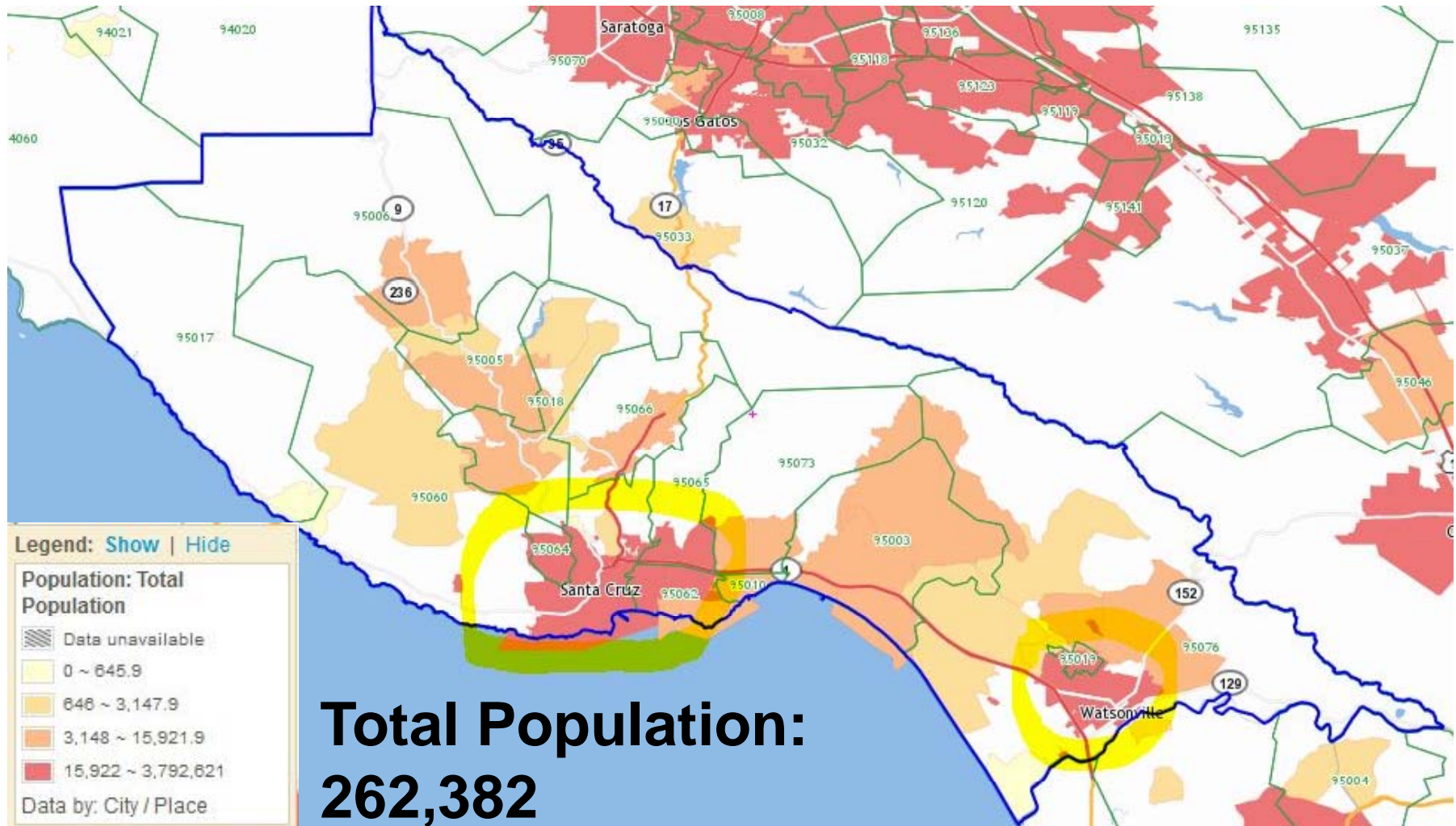


# Where Is Santa Cruz County, California?



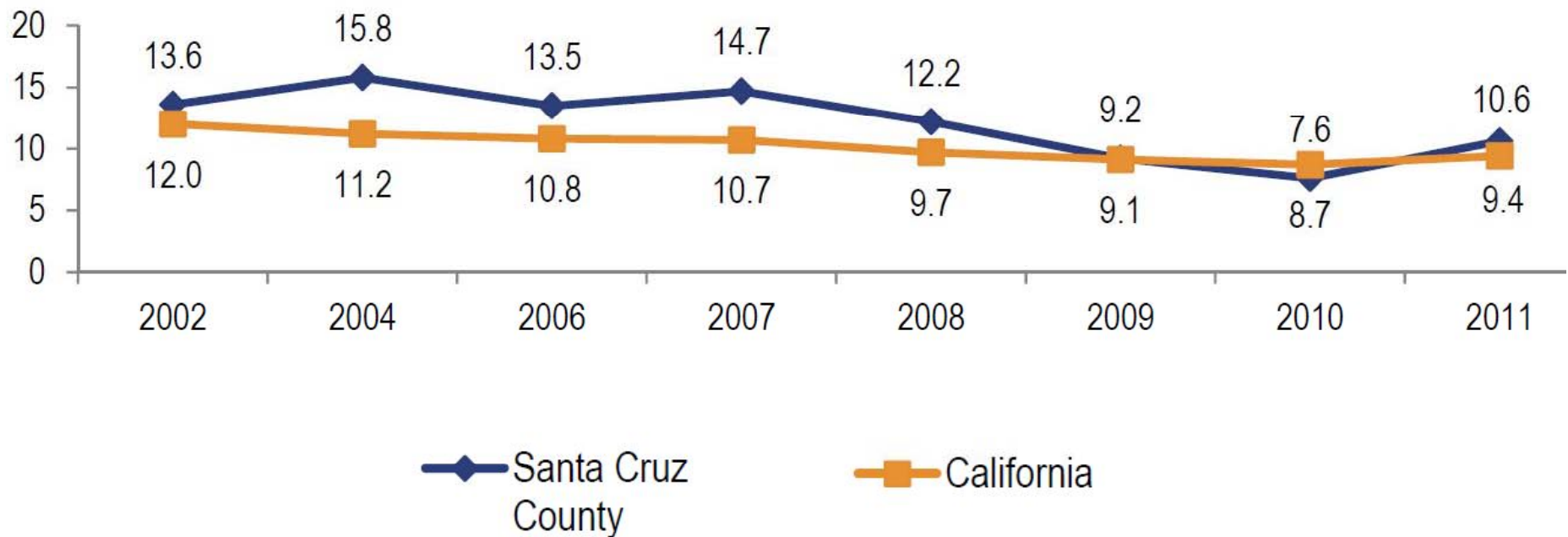
Paul Chinn / The Chronicle

# Where is Santa Cruz County, California?



# Substantiated Cases of Child Abuse

## Rate of Substantiated Cases of Child Abuse per 1,000 Children (Ages 0-17)



Source: Needell, B. et al. (2012). 2002-2011 *Child Welfare Services Reports for California*, University of California at Berkeley Center for Social Services Research.



## Triple P in Santa Cruz County

---

- Funders
  - First 5 Santa Cruz County
  - County Health Services Agency (via Mental Health Services Act)
  - County Human Services Department (Child Welfare)
- Began in November 2009
- Implementing Levels 1 – 5 communitywide
  - Core, Teen & Stepping Stones





## Triple P and Child Welfare

---

- Child welfare primarily contracts with one non-profit to provide parent education to court-mandated CPS clients
  - Triple P adopted as parent education curriculum for families with open child welfare cases
  - Group Triple P funded by child welfare department





## Purpose of Special Study

---

- To examine whether participation in Triple P is associated with:
  - Lower rates of **new** substantiated maltreatment allegations for families involved with child welfare (recurrence)
  - Lower rates of **new** foster care placements for families involved with child welfare



## Study Participants

---

- Parents in Santa Cruz County who entered (or re-entered) the child welfare system
  - Level 4 Group **Triple P** participants between January 2010 – June 2011
  - Participants in a **prior model** of parent education between July 2008 – June 2009



# Overview of Programs

Group Triple P	Prior Model
<ul style="list-style-type: none"><li>• 8 sessions covering:<ul style="list-style-type: none"><li>• Causes of child behavior</li><li>• Parents' goals for change</li><li>• Strategies to promote children's development</li><li>• Strategies to manage misbehavior</li><li>• Planning for high-risk situations</li><li>• Individual consultations</li></ul></li></ul>	<ul style="list-style-type: none"><li>• 10 sessions covering:<ul style="list-style-type: none"><li>• Child development</li><li>• Anger management</li><li>• Self-esteem</li><li>• Communication</li><li>• Limit setting</li><li>• Creating family rules</li><li>• Consequences vs. punishment</li><li>• Positive parenting</li><li>• Normal sexual development</li><li>• Health &amp; safety issues</li><li>• Nutrition &amp; wellness</li><li>• Stress reduction</li></ul></li></ul>
<ul style="list-style-type: none"><li>• Evidence-based, manualized, self-regulatory framework</li></ul>	<ul style="list-style-type: none"><li>• "Home-grown" compilation of various practices</li></ul>



# Characteristics of Study Participants

## Sample Size

PARTICIPATION VARIABLES	TRIPLE P	PRIOR MODEL
Number of parents receiving intervention:	158	137
Number (and percentage) of parents whose data are included in these analyses:	99 (63%)	137 (100%)

Source: Triple P data and Santa Cruz County Human Services Department data.





# Characteristics of Study Participants

## Demographic Profile by Program

PARTICIPANT CHARACTERISTICS	TRIPLE P	PRIOR MODEL
<b>Gender</b>		
Female (Male)	62% (38%)	58% (42%)
<b>Race/ethnicity</b>		
White/ Caucasian	49%	53%
Hispanic/Latino	39%	41%
Black/ African American	3%	5%
Asian or Pacific Islander	3%	2%
Multi-race/ethnicity or other	6%	0%
<b>Primary language</b>		
English (Spanish)	86% (14%)	84% (16%)
<b>Age at program entry (years)</b>		
Average age (range)	34.21 (16-61)	35.27 (15-63)
<b>Children in family with CW encounters</b>		
Average number per family (range)	2.42 (1-9)	2.45 (1-8)

Source: Triple P data and Santa Cruz County Human Services Department data.



# Characteristics of Study Participants

## Previous Experience with Child Welfare by Program

Substantiated allegations in three years prior to program entry	TRIPLE P	PRIOR MODEL
Percent of participants with allegations:	82%	86%
Average number of allegations (range):	4.39 (1-28)	4.11 (1-22)
Percent with one or more children in foster care:	51%	53%

Source: Santa Cruz County Human Services Department data.

# Characteristics of Study Participants

*Outside of program type, are the samples equivalent?*

- Programs differed in the timing of program participation and consent procedures.
- Programs did not differ along any other measured dimension.
- Thus, participant outcomes from the prior model serve as a good metric for evaluating Triple P participant outcomes.





## Methodology

---

Child Welfare involvement data were obtained from the *Santa Cruz County Human Services Department* for the period of July 2008-June 2012.

Two periods of program effect were assessed:

- Short-term
  - 1 to 6 months after program start
- Mid-term
  - 7 to 12 months after program start

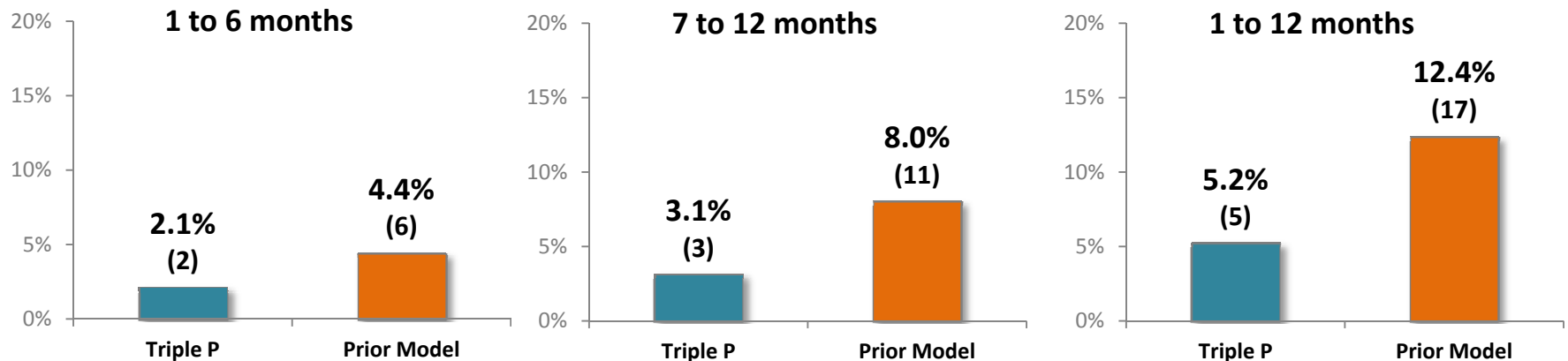




# Key Findings

- The likelihood of a new substantiated maltreatment allegation was two times higher for participants in the prior parenting program compared to the Triple P program.

Percentage (number) of new allegations from:



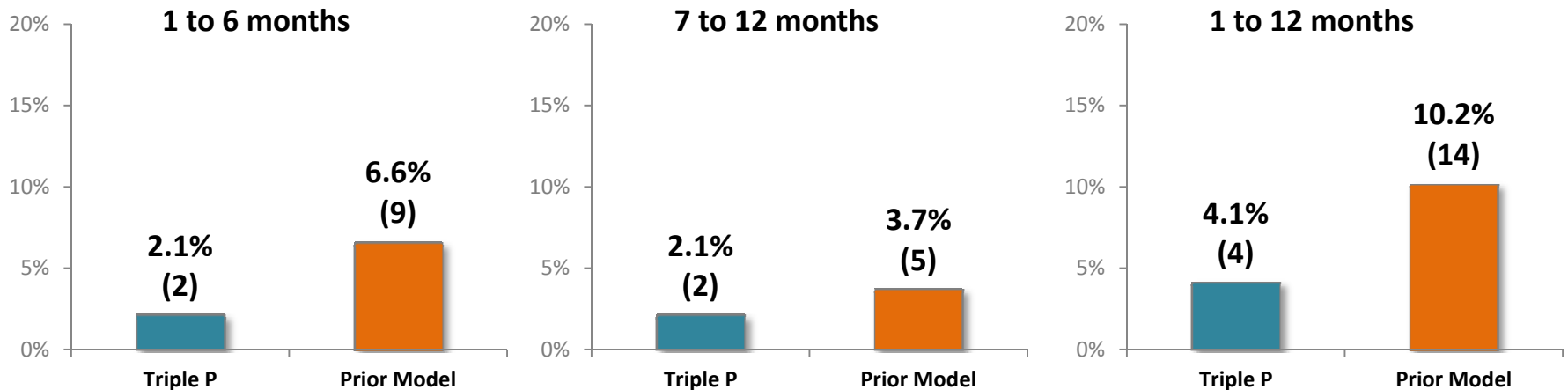
Sample: Triple P n= 97, Prior model n= 137  
Source: Santa Cruz County Human Services Department data.



# Key Findings

- Rates of new foster care placement were lower for Triple P than prior program participants.

Percentage (number) of new placements from:



Sample: Triple P n= 97, Prior model n= 137

Source: Santa Cruz County Human Services Department data.



# Summary

---

**Results suggest that Triple P participation may be associated with reductions in later involvement in the Child Welfare system among families with previous contact with the system.**

- Triple P participation is associated with **fewer subsequent child maltreatment allegations** than the prior program.
- Triple P participation is associated with **fewer foster care placements** compared to the prior program.

## Study Limitations and Next Steps

- Sample size
- Consent procedures
- Generalizability
- Long-term effects





# Questions?

---

For additional information, contact:

## **Nicole Young, MSW**

Triple P Coordinator for First 5 Santa Cruz County

Optimal Solutions Consulting

[nicole@opti-solutions.com](mailto:nicole@opti-solutions.com)

(831) 594-1498

## **Kim Carpenter, PhD**

First 5 Santa Cruz Project Manager

Applied Survey Research

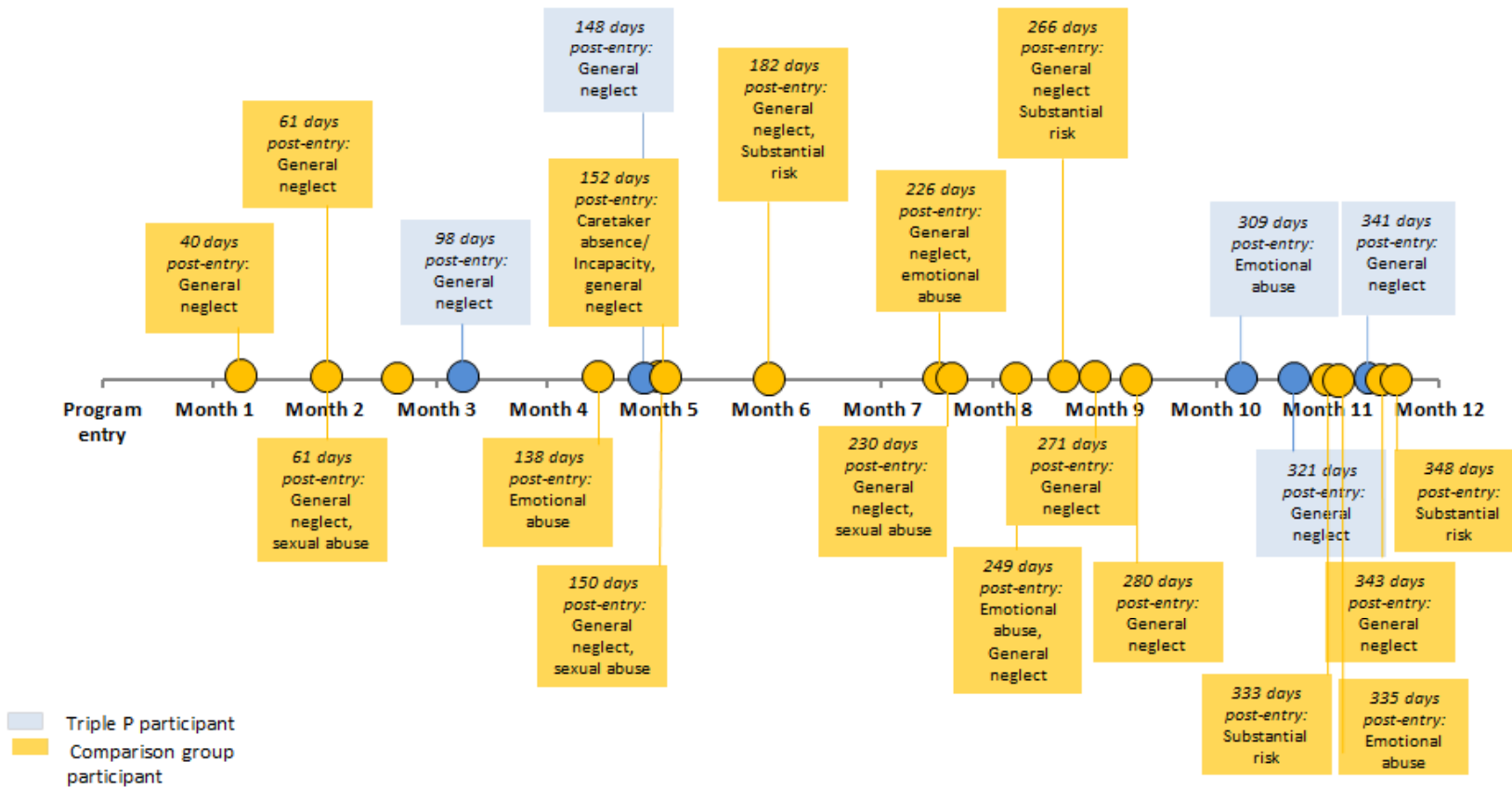
[kim@appliedsurveyresearch.org](mailto:kim@appliedsurveyresearch.org)

(408) 247-8319



# Key Findings

## Timeline of Triple P and Comparison Group Substantiated Allegations Occurring After Program Enrollment



Source: Santa Cruz County Human Services Department data. N= 17 comparison group allegations, 5 Triple P allegations.